

Visualising UKCEH Land Cover Class using a GIS application

The Land cover map raster data products for 2021 are multiband rasters

- The 10m raster datasets have two-bands. Band 1 is the UKCEH Land Cover Class identifier; band 2 is an indicator of classification confidence.
- The 25m datasets have three bands. Band 1 is the dominant UKCEH Land Cover Class identifier; bands 2 and 3 are indicators of classification confidence.

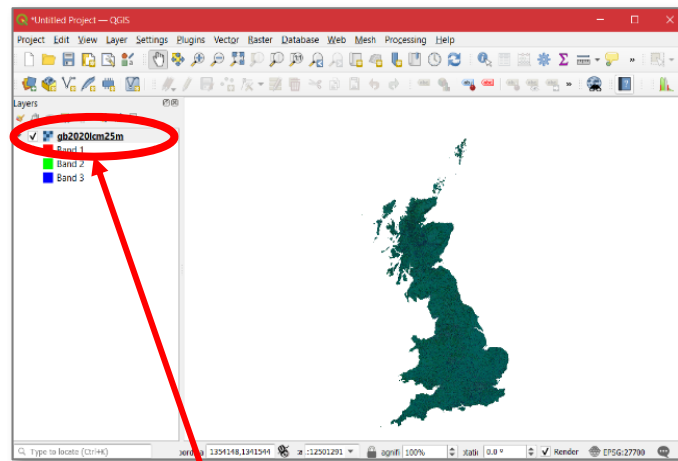
This document is a short guide for using the most commonly used GIS applications to visualise the Land Cover Class data contained in band 1.

For a full description of the data, please refer to the product documentation.

Visualising the data using QGIS

Add the file to your project.
The data will be presented
and will appear in the layers
panel:

Double-click on the layer
name in the layers panel.

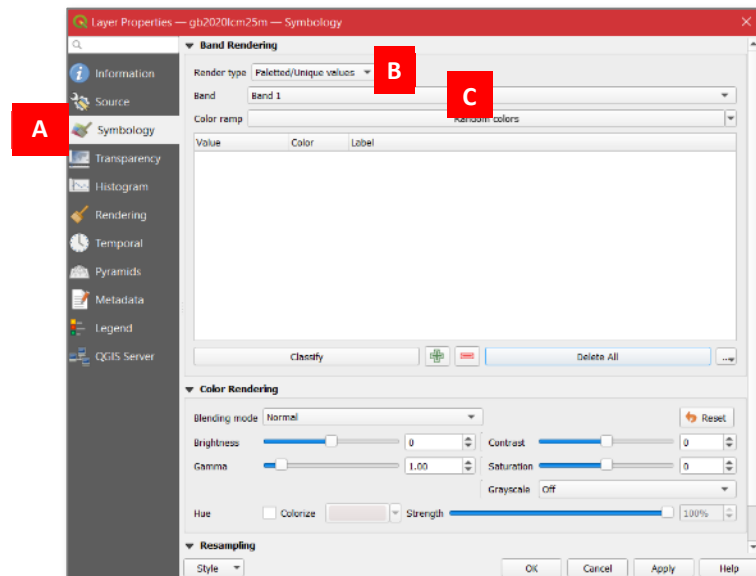


Double-click here

The layer properties, box will
be displayed, choose
Symbology from the left-hand
menu bar [A]

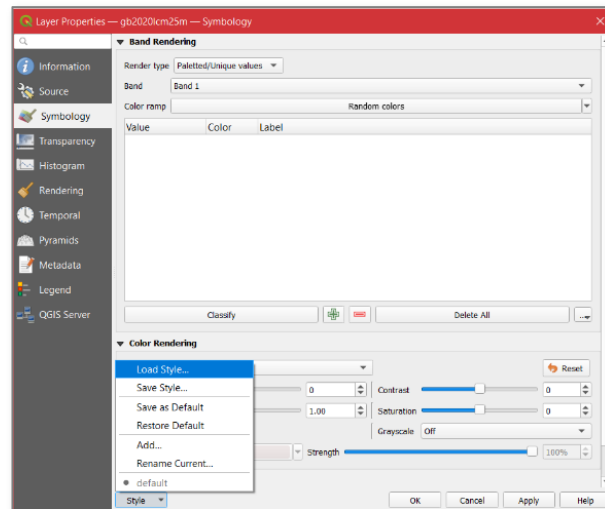
In the render type box, choose
Palletted/unique values [B]

In the band box, choose **Band**
1 [C]

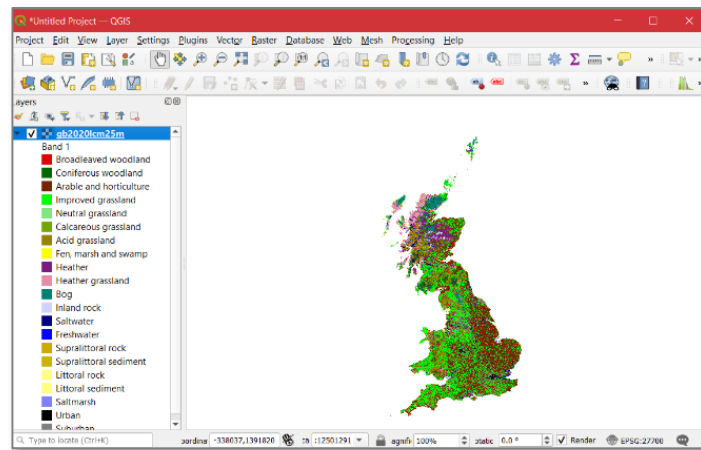


Click the **style**, button and choose **Load style** from the menu.

Browse to the LCMcolours_QGIS.qml file that accompanies this document, select it and click **open**.



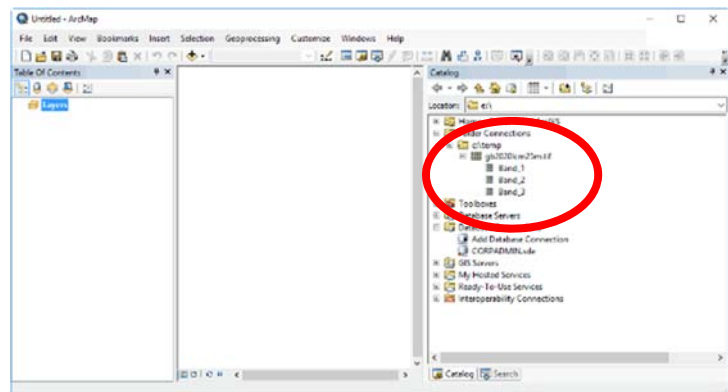
Click OK and the map will be redrawn with the correct classification.



Visualising the data using ArcGIS Desktop

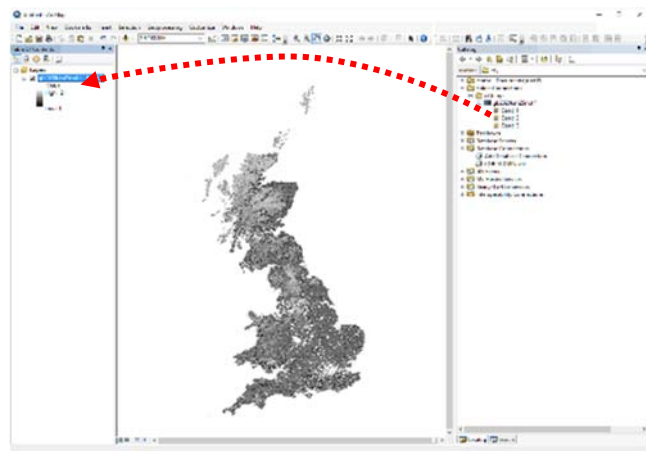
In the catalogue window, browse to the folder in which the data is stored.

Expand the file to display the raster's bands.



Drag band_1 into the Table of contents window.

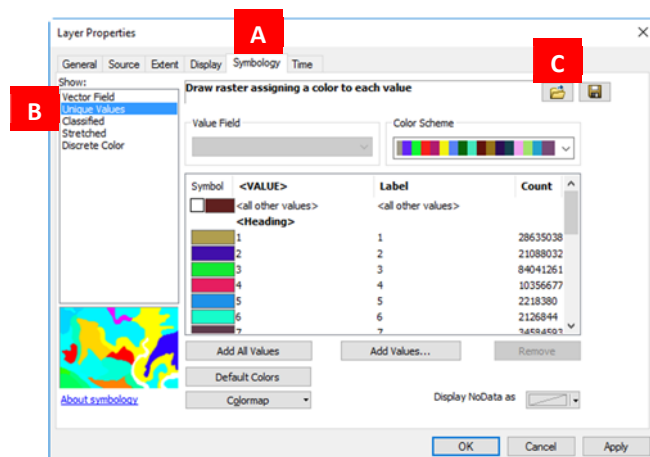
Double-click on the layer name in the table of contents. The layer properties box will be displayed.



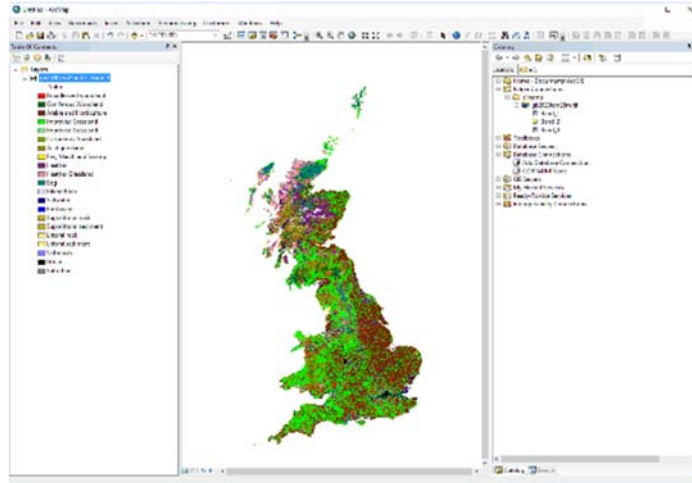
In the layer properties box, select the **symbol** tab [A].

Choose **Unique Values** as the symbology type [B] (if prompted to calculate the values, click YES)

Click the import button [C] and load in the layer file (LCMcolours.lyr) provided with these instructions.



Click OK and the map will be redrawn with the correct classification.

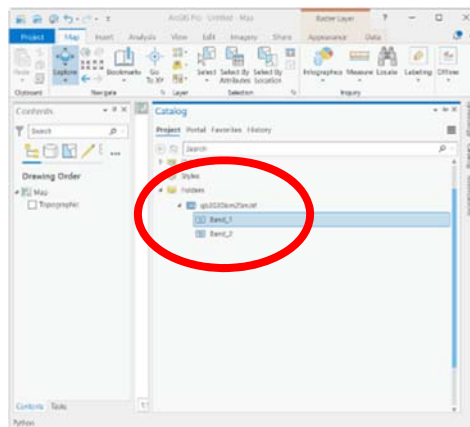


Visualising the data using ArcGIS Pro

In your ArcGIS Pro project, open the catalogue window

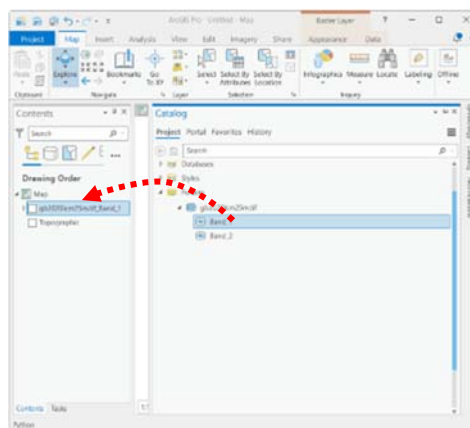
Browse to the folder in which the data is stored.

Expand the file to display the raster's bands.



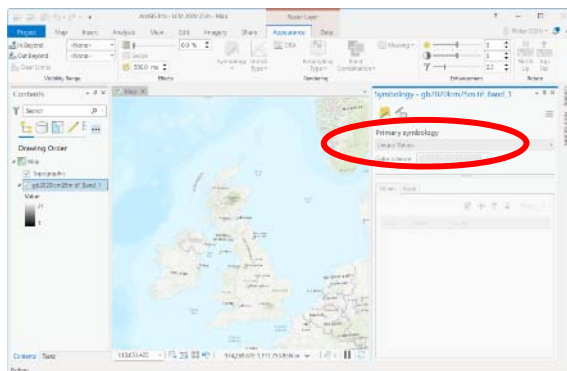
Drag band_1 into the Table of contents window.

Double-click on the layer name in the table of contents. The layer properties box will be displayed.



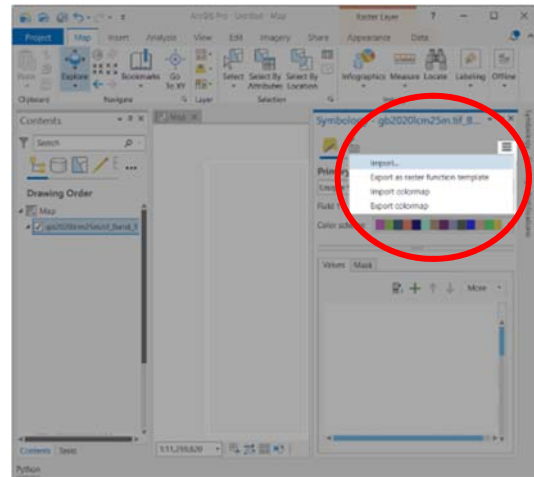
Select the layer in the Contents window and open the symbology properties (**Appearance > Symbology**)

In the primary symbology options [A] choose Unique values. (If prompted to build an attribute table, click **Yes**)



Click on the hamburger menu in the symbology panel and choose **Import**.

Load in the layer file (LCMcolours.lyr) provided with these instructions.



The map will be redrawn with the correct classification.

